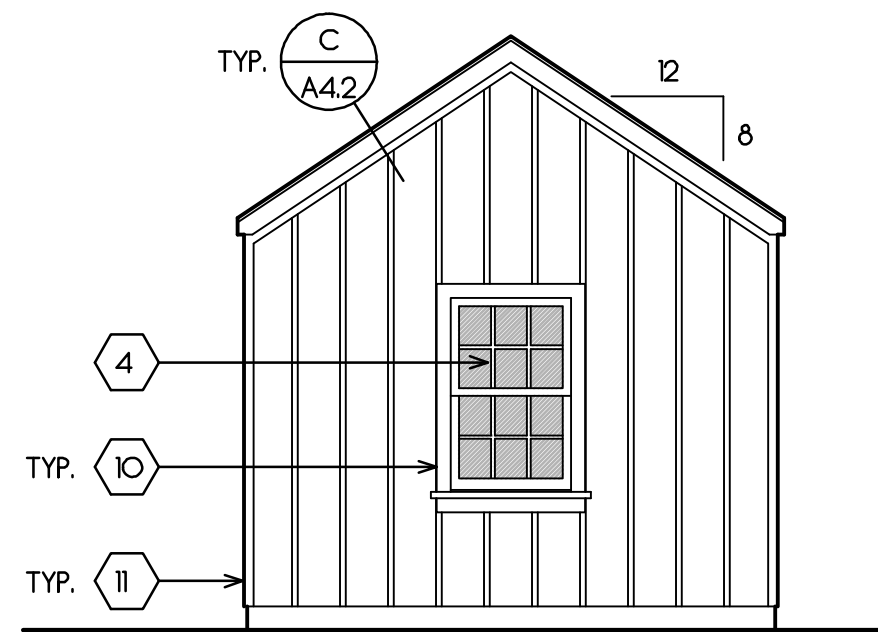
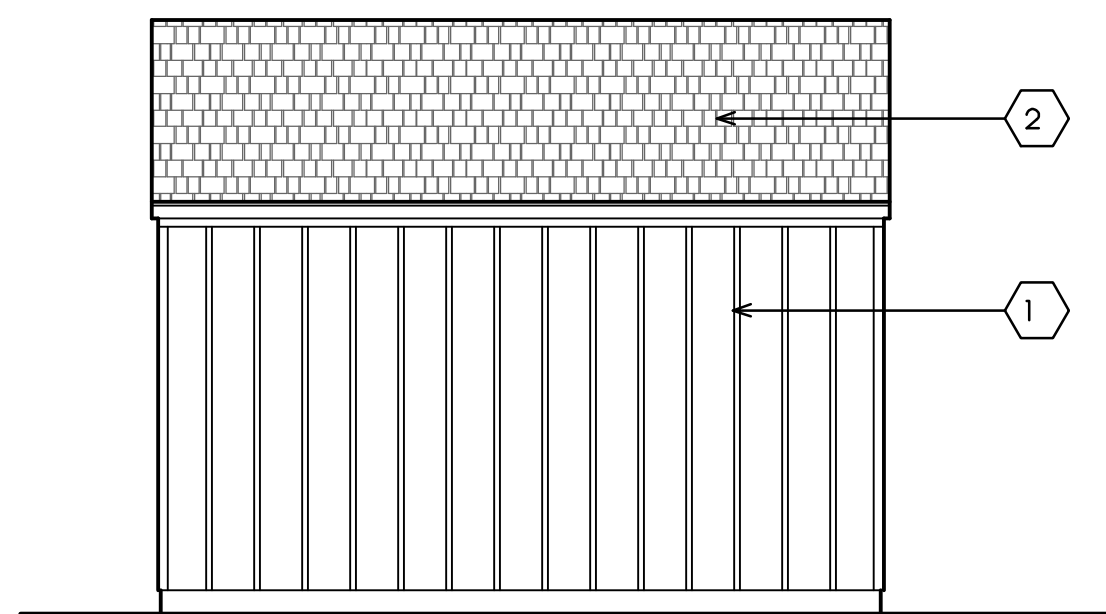


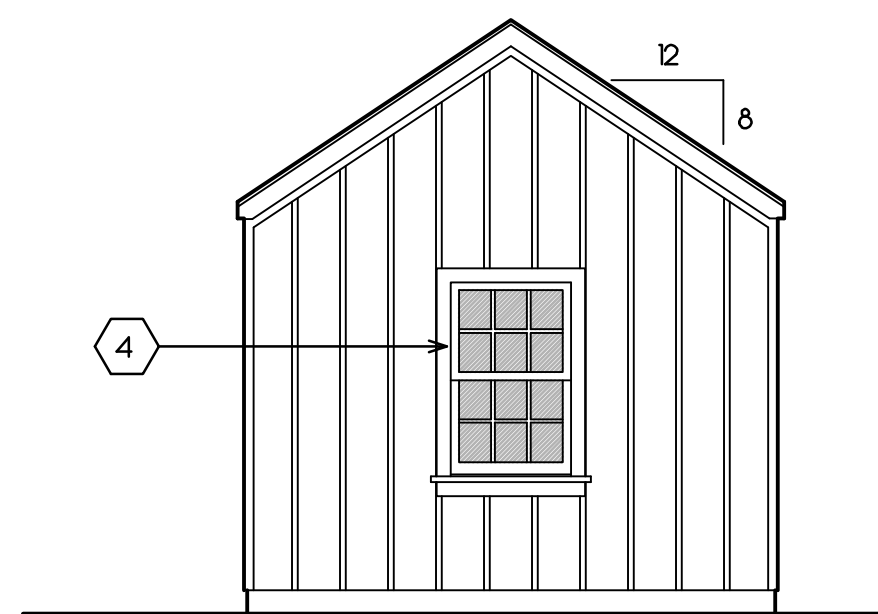
West Elevation



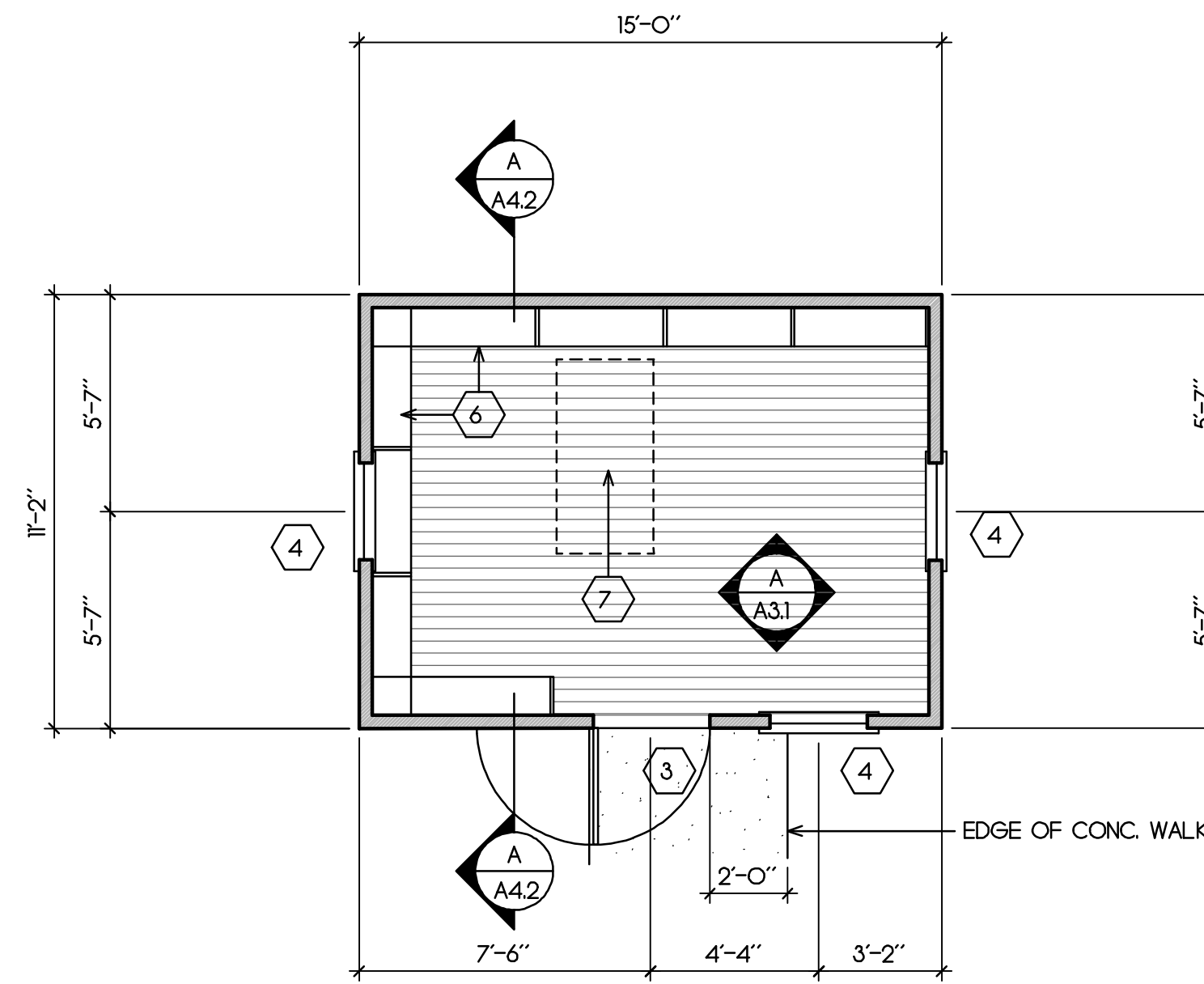
South Elevation



East Elevation

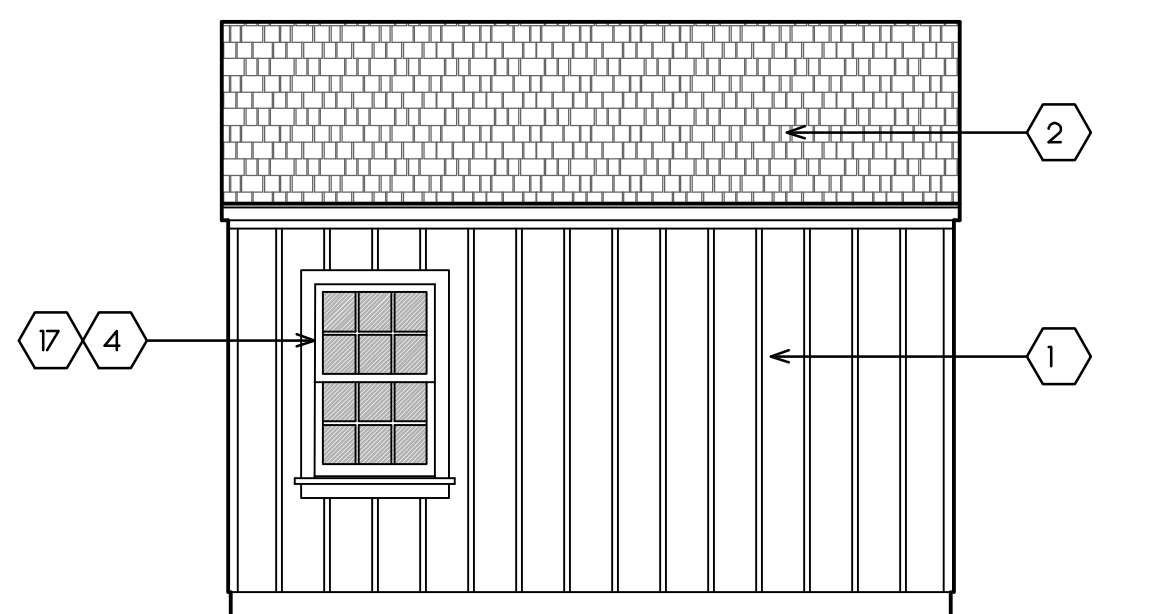


North Elevation

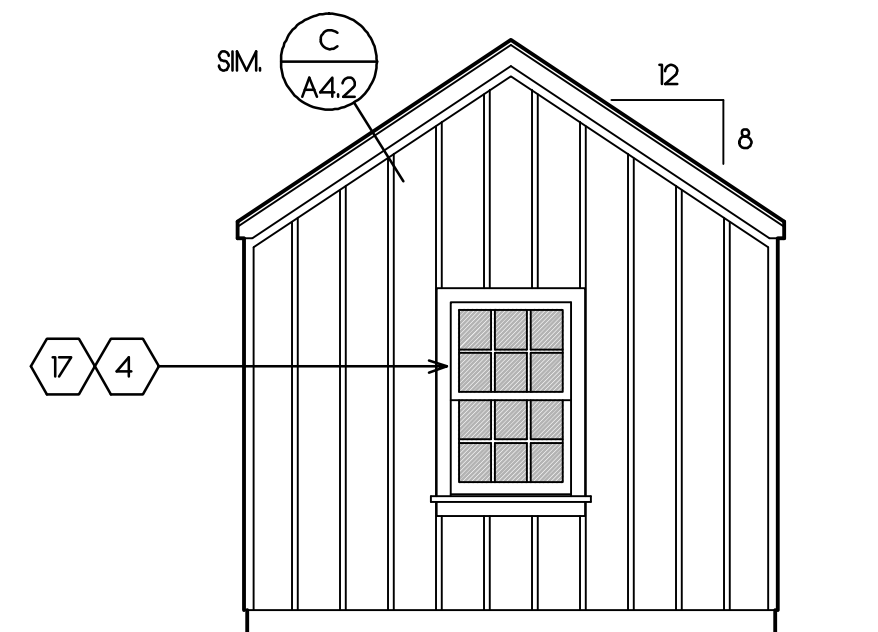


Floor Plan

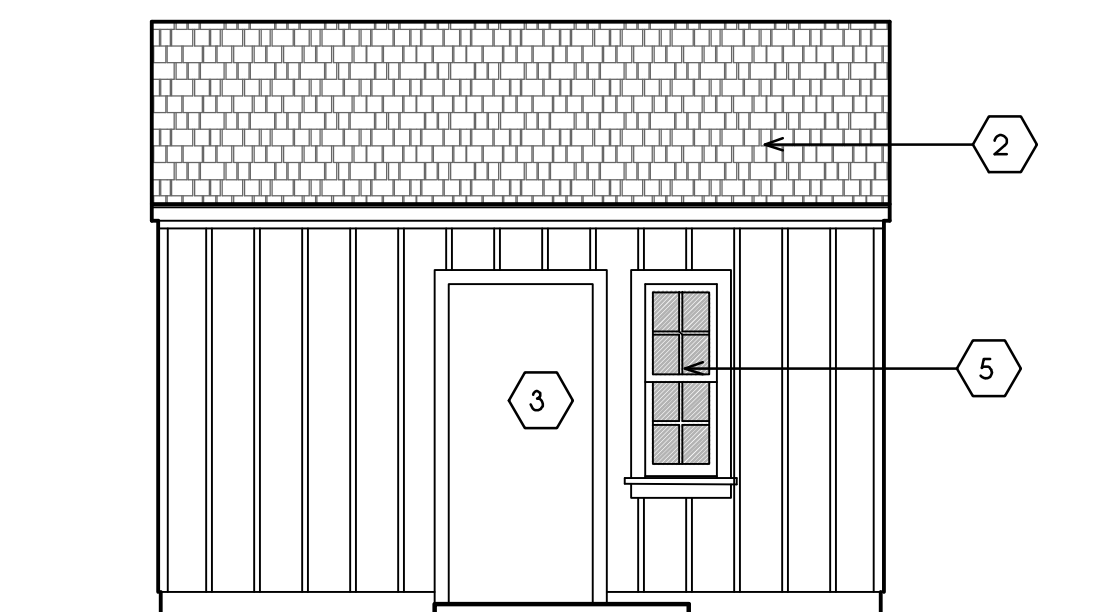
GIFT SHOP



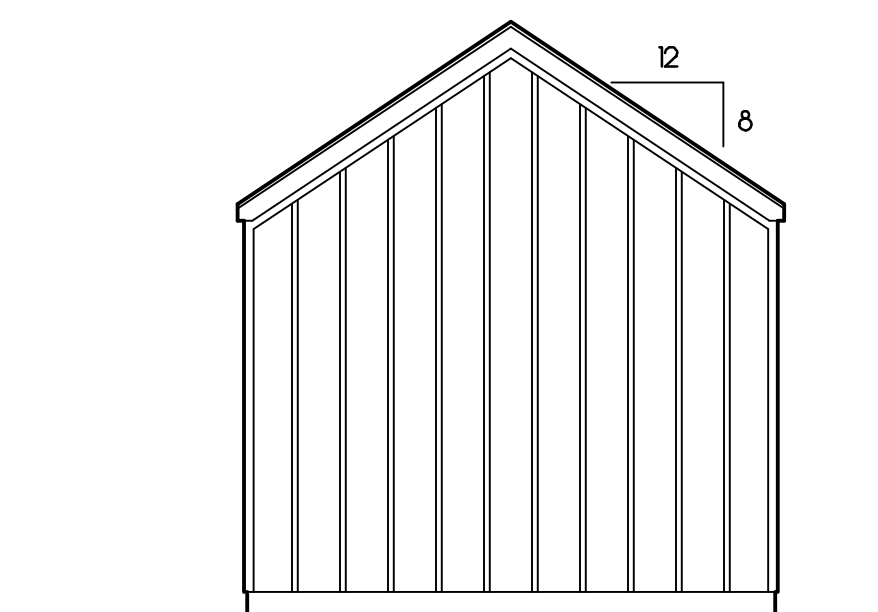
West Elevation



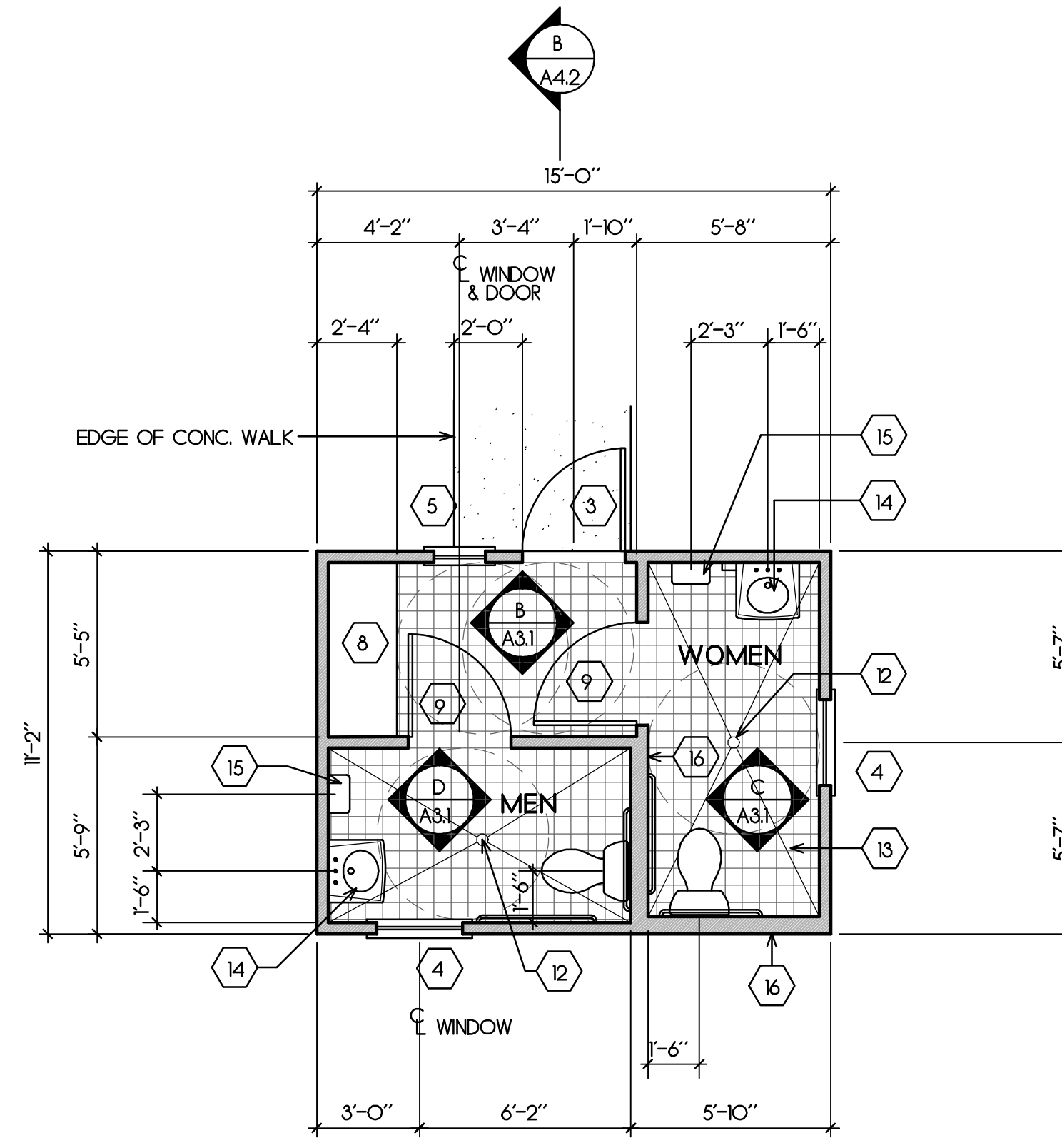
South Elevation



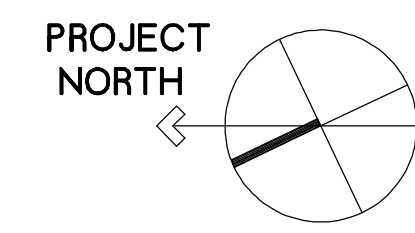
East Elevation



North Elevation



Floor Plan



RESTROOM

SHEET NOTES

1. REDWOOD BOARD & BATT SIDING (BATTS @ 12" O.C.)
2. WOOD SHINGLES.
3. 3'-0" X 6'-8" X 1-3/4" WOOD DOOR
4. 2'-6" X 4'-0" WOOD DOUBLE-HUNG WINDOW. CUSTOM-MADE, SINGLE PANE, TRUE DIVIDED LITES
5. 1'-6" X 4'-0" WOOD DOUBLE-HUNG WINDOW. CUSTOM-MADE, SINGLE PANE, TRUE DIVIDED LITES
6. 12" DEEP ADJUSTABLE WOOD SHELVING.
7. SPACE FOR DESK (N.I.C.)
8. WOOD STORAGE CLOSET.
9. 3'-0" X 6'-8" X 1-3/4" SELF-CLOSING WOOD DOOR
10. 2 X 4 REDWOOD CASING & SKIRT.
11. 1 X 3 REDWOOD CORNER TRIM.
12. FLOOR DRAIN.
13. 6 X 6 CERAMIC TILE FLOOR - SLOPE TO DRAIN
14. WALL-HUNG LAVATORY.
15. HAND DRYER - SEE INT. ELEVS.
16. 2 X 6 STUD WALL.
17. OBSCURE GLASS IN THIS WINDOW.

DOUGLAS HOWE
ARCHITECT
516 NINTH STREET
PACIFIC GROVE, CALIFORNIA
831 - 647 - 1774

CITY OF PACIFIC GROVE
INC. 1889

PROJECT:
Point Pinos Lighthouse Restoration
CITY OF PACIFIC GROVE

DATE
JULY 26, 2011

REVISIONS:

DRAWN BY:
D. HOWE

SHEET TITLE:

SHEET
A2.1