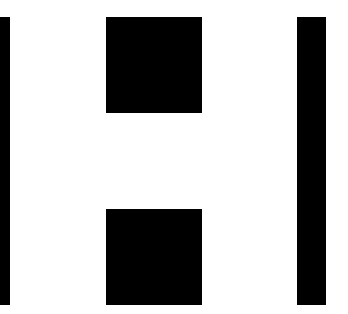


SHEET NOTES

1. GYPSUM WALLBOARD WALL FINISH.
2. CERAMIC TILE WAINSCOT.
3. WINDOW.
4. INSTANT WATER HEATER - SEE MECH DWGS.
5. WALL-MOUNTED MIRROR IN METAL FRAME.
6. WALL-MOUNTED ELECTRIC HAND DRYER.
7. ACCESSIBLE WATER CLOSET - SEE PLUMBING DRAWINGS.
8. WALL-MOUNTED LAVATORY - SEE PLUMBING DRAWINGS.
9. DOOR MOUNTED HAT/COAT HOOK.
10. ADJUSTABLE WOOD SHELVES.
11. WOOD COUNTERTOP.
12. SUPPLY CABINET.
13. RESTROOM DOOR SIGNAGE - SEE (16 A41)
14. 1 X 4 CASING, TYP.
15. INSULATE WASTE LINE & HOT WATER PIPES.



DOUGLAS HOWE
ARCHITECT

516 NINTH STREET
PACIFIC GROVE, CALIFORNIA
831 - 647 - 1774



PROJECT:

Point Pinos Lighthouse Restoration
CITY OF PACIFIC GROVE

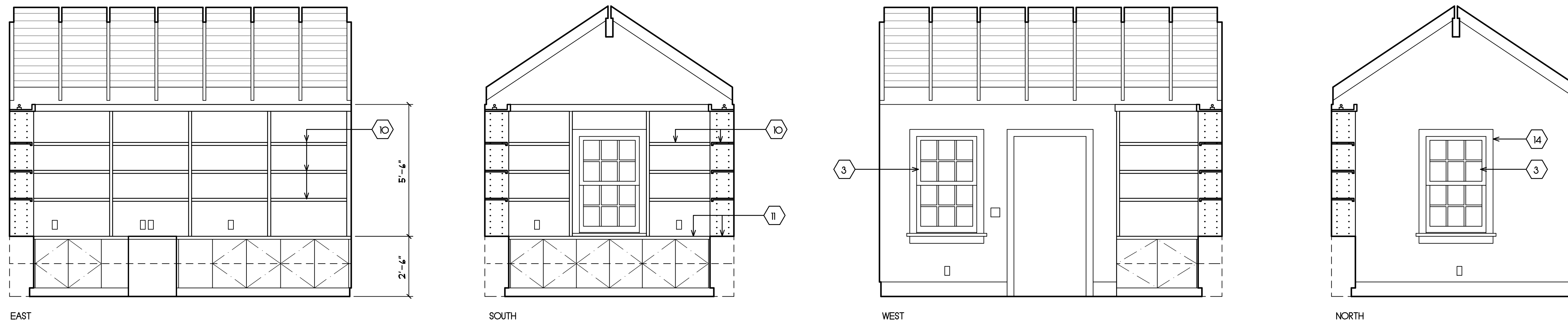
DATE
JULY 26, 2011
REVISIONS:

DRAWN BY:
D. HOWE

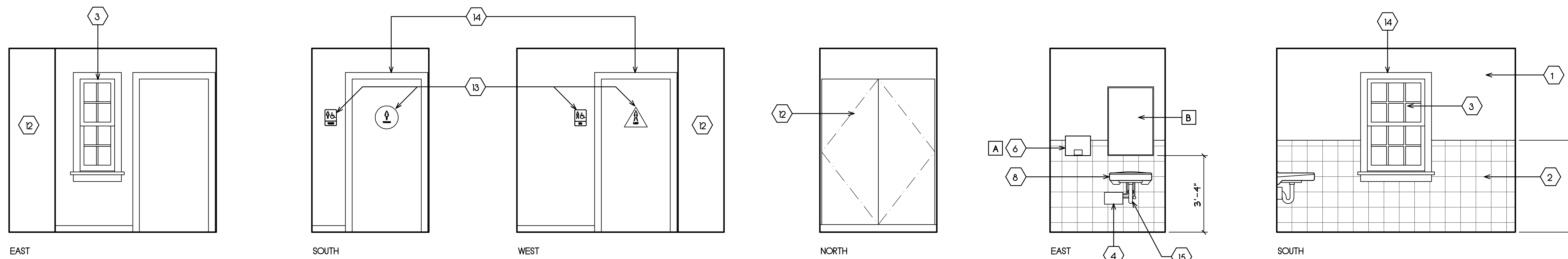
SHEET TITLE:

SHEET

A3.1

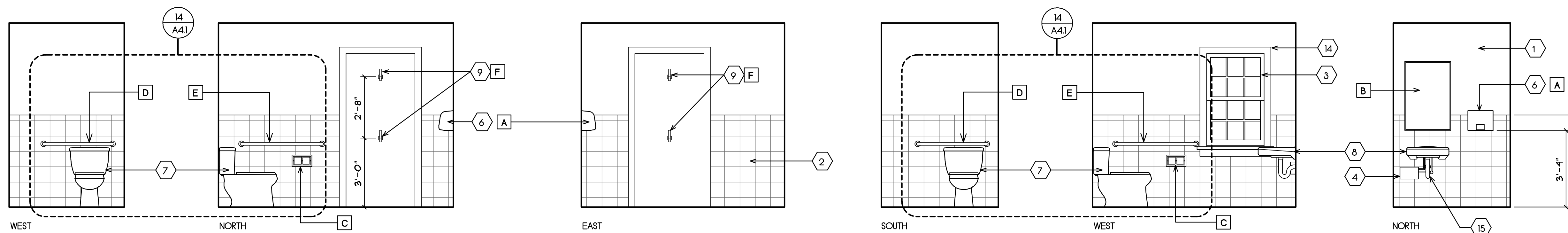


A GIFT SHOP



B VESTIBULE

B WOMEN



C WOMEN

D MEN