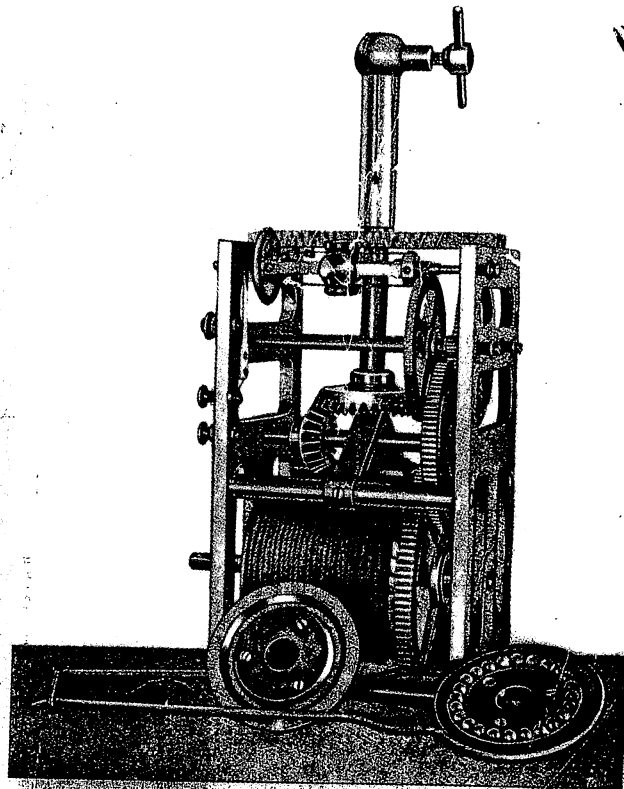
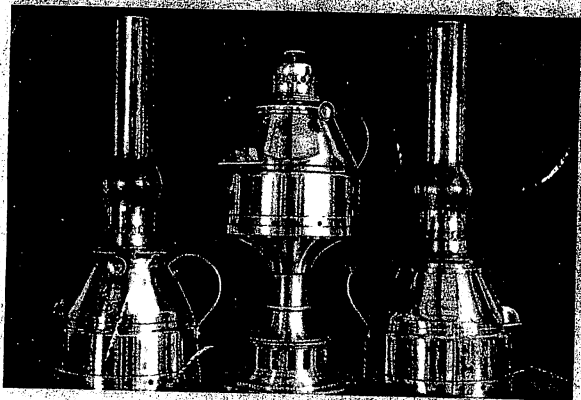
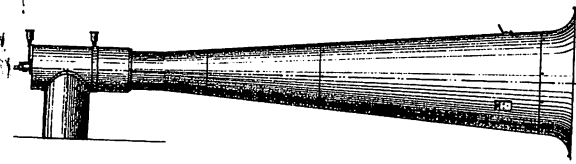


INSTRUCTIONS TO LIGHT-KEEPERS

A photoreproduction of the 1902 Edition of
Instructions to Light-Keepers and
Masters of Light-House Vessels



Great Lakes Lighthouse Keepers Association

Masters to have
police powers.

180. Masters of light-house tenders shall have police powers in matters pertaining to Government property and smuggling. (Act approved June 16, 1880, vol. 21 U. S. Stat., p. 263.)

CHAPTER V.

REGULATIONS IN REGARD TO PROVISIONS FOR LIGHT-HOUSE KEEPERS, OFFICERS, AND CREWS OF LIGHT-HOUSE VESSELS.

181. *Table of weekly allowance per man for vessels of the Light-House Establishment.*

Beef (corned).....	1 pound.	Molasses	$\frac{1}{2}$ pint.
Pork	2 pounds.	Coffee	7 ounces.
Codfish	1 pound.	Tea	1 $\frac{1}{4}$ ounces.
Mutton (fresh canned).....	1 pound.	Butter	8 ounces.
Bacon	1 pound.	Vinegar.....	$\frac{1}{2}$ pint.
Ham	1 pound.	Pickles.....	$\frac{1}{2}$ pound.
Flour.....	4 pounds.	Tomatoes (canned).....	8 ounces.
Pilot bread.....	2 pounds.	Corn (canned)	8 ounces.
Rice.....	$\frac{1}{4}$ pound.	Apples (evaporated).....	2 ounces.
Corn meal	$\frac{1}{2}$ pound.	Peaches (dried)	2 ounces.
Oatmeal	$\frac{1}{4}$ pound.	Raisins	1 ounce.
Beans	1 pint.	Salt.....	6 ounces.
Pease (split)	$\frac{1}{2}$ pint.	Pepper.....	$\frac{1}{4}$ ounce.
Potatoes	12 pounds.	Mustard	$\frac{1}{4}$ ounce.
Onions	2 pounds.	Baking powder.....	1 ounce.
Sugar	2 pounds.		

182. *Table of annual allowance per man for light-stations and fog-signal stations.*

Pork	200 pounds.	Coffee (green grain)	24 pounds.
Beef.....	100 pounds.	Beans or pease	10 gallons.
Flour.....	2 barrels.	Vinegar	4 gallons.
Rice.....	50 pounds.	Potatoes	2 barrels.
Brown sugar.....	50 pounds.		

Rations put on
board in quarterly
quantities.

183. Salt provisions and the other articles embraced in the ration list should be put on board in quarterly quantities, and at or near the beginning of each quarter year, deducting, as near as may be estimated, the quantities of each article of pork and beef, etc., which may be substituted by fresh meat and green vegetables during the quarter.

Commutation of
rations.

184. Commutation, not exceeding one-third of the whole number of rations allowed on board any light-vessel, may be permitted at the current contract price of the rations, upon satisfactory assurances being given to the inspector that this commutation money will be used in purchasing fresh provisions or fruit for the use of the messes on board, and that the money shall not be applied to any other purpose.