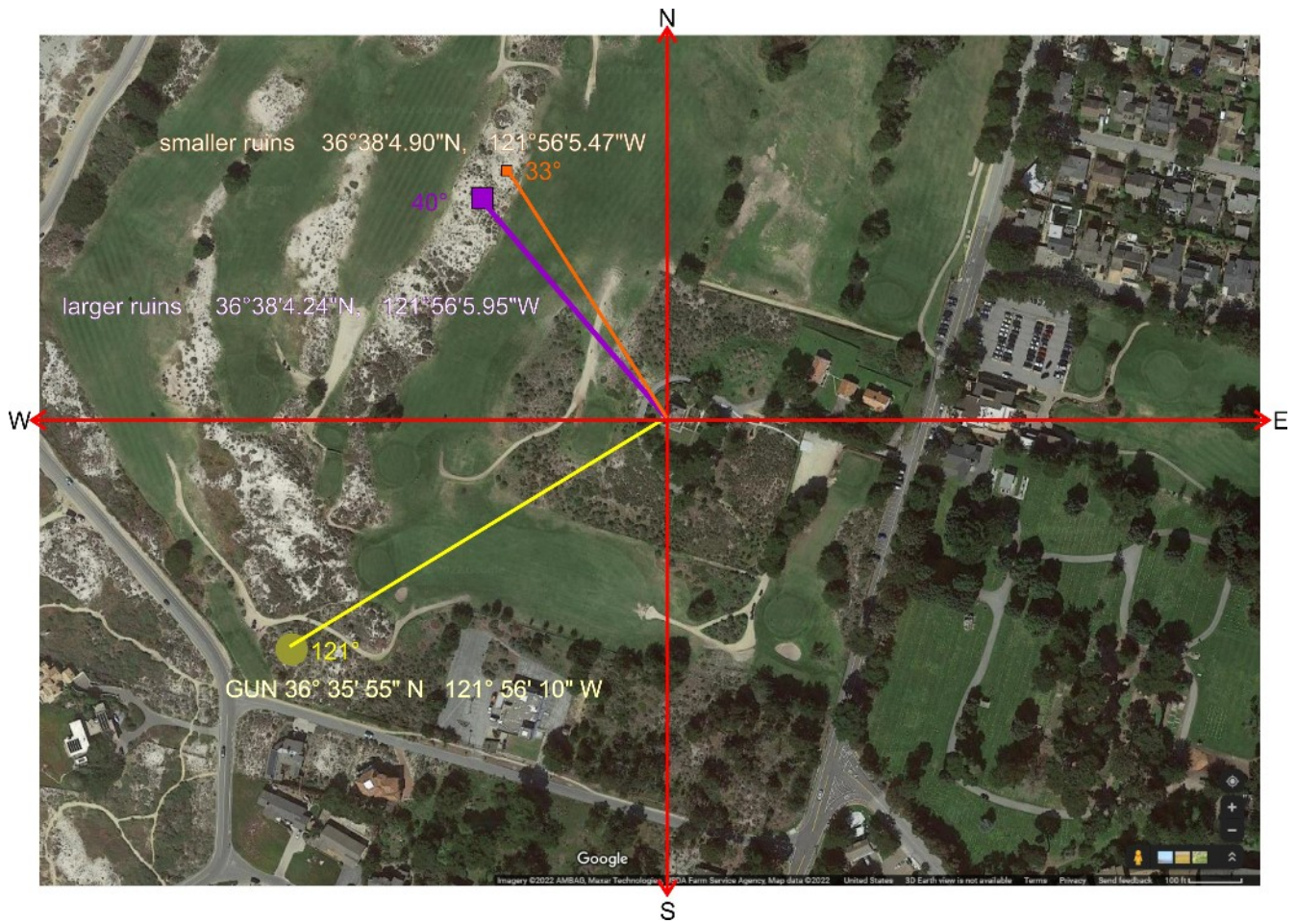


WWII Project at Point Pinos Lighthouse



final locations plotted over Google Map

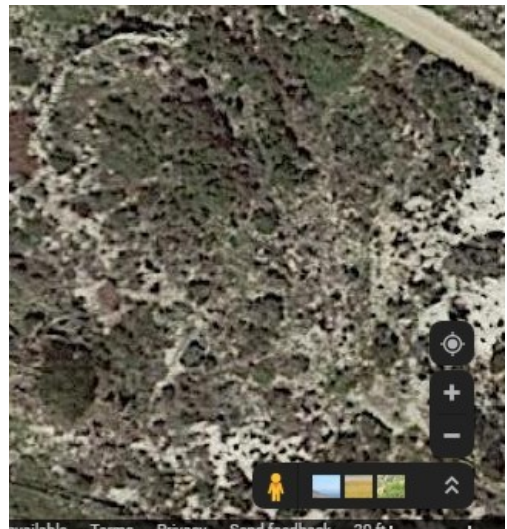
GPS Coordinates Plotted



Gun Placement



remaining sandbags



Google Map

1945 Aerial Image

note: guns and watch tower are already gone, but tents, etc. are still present



Watch Tower 'Evidence' is sketchier



PPLH Keeper



Thomas Henderson (1938-1955)

Served at Point Sur before Point Pinos. Family moved to first Coast Guard house during WW II. Second bedroom at Lighthouse used as Coast Artillery's command post. Lens was lit with occasional blackouts.

1940s Tech:

- Incandescent Lamp w/ Electronic Flasher
- Toilet Paper / Flush Toilet
- City Water
- Cars / Paved Road to PG
- Telephone / Radio
- Manual Typewriters

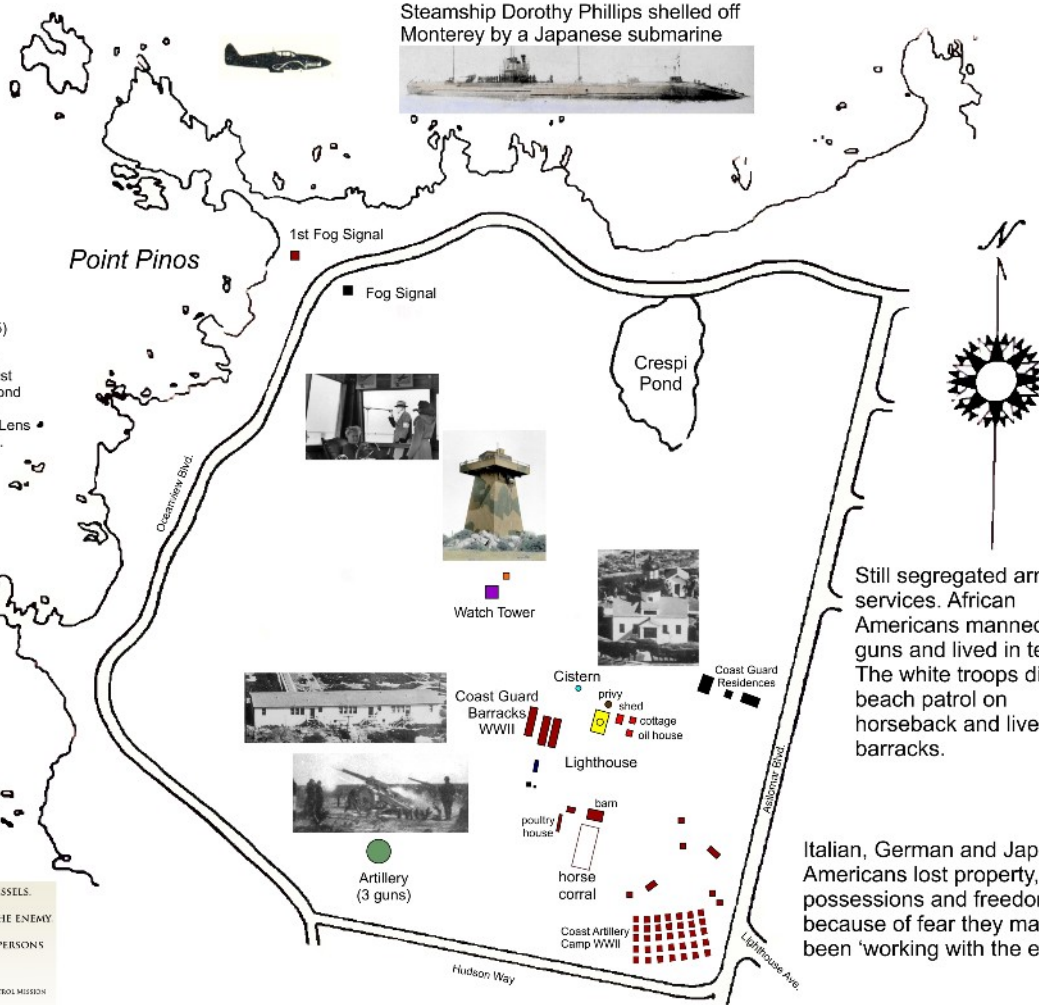


Beach Patrol

LOOK FOR AND REPORT SUSPICIOUS VESSELS.
 REPORT AND PREVENT LANDINGS BY THE ENEMY
 PREVENT COMMUNICATION BETWEEN PERSONS ON SHORE AND THE ENEMY AT SEA.



Steamship Dorothy Phillips shelled off Monterey by a Japanese submarine



Still segregated armed services. African Americans manned the guns and lived in tents. The white troops did beach patrol on horseback and lived in barracks.

Italian, German and Japanese Americans lost property, possessions and freedom because of fear they may have been 'working with the enemy'