



NRHP Plaque

Fountain

Survey Marker

Garden

Gypsy Anchor

Jiggs' grave



Picnic Tables  
Flag

Gift Shop

Rest Rooms  
Whale Sign

Oil House

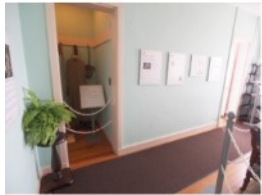
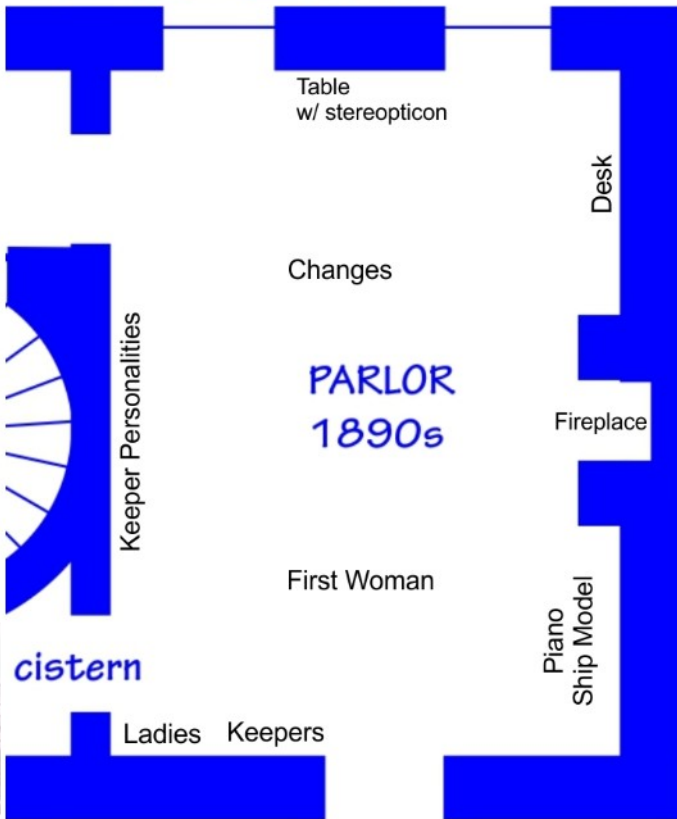
Bike Parking

Red Buoy

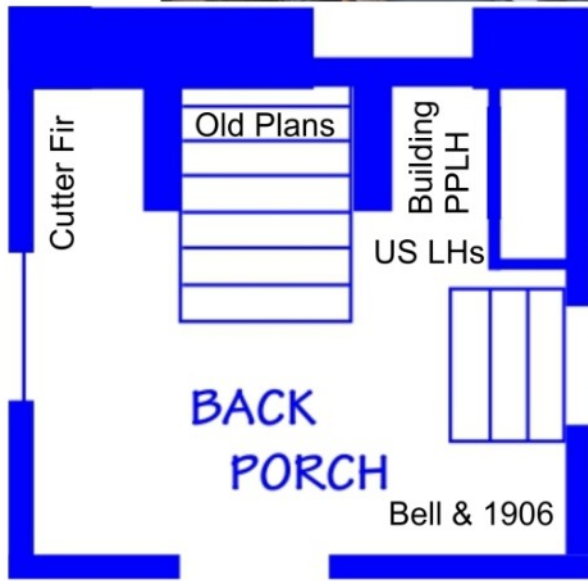


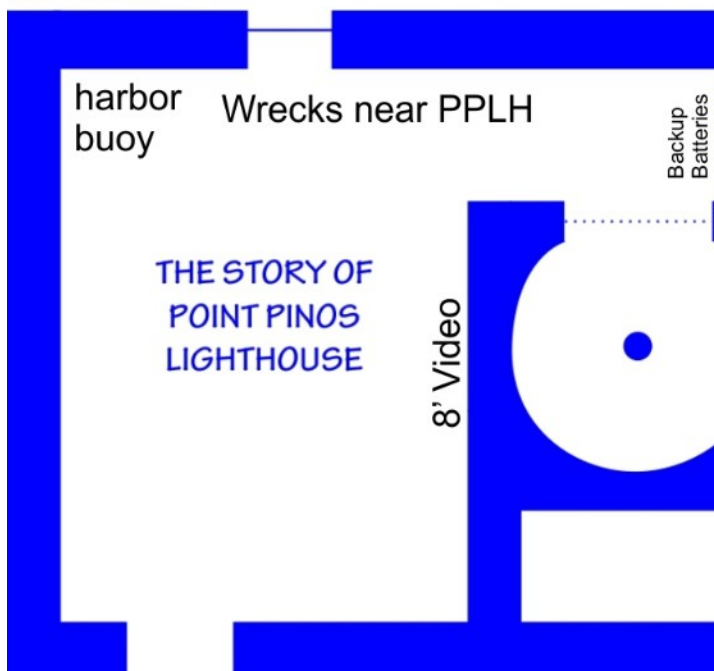














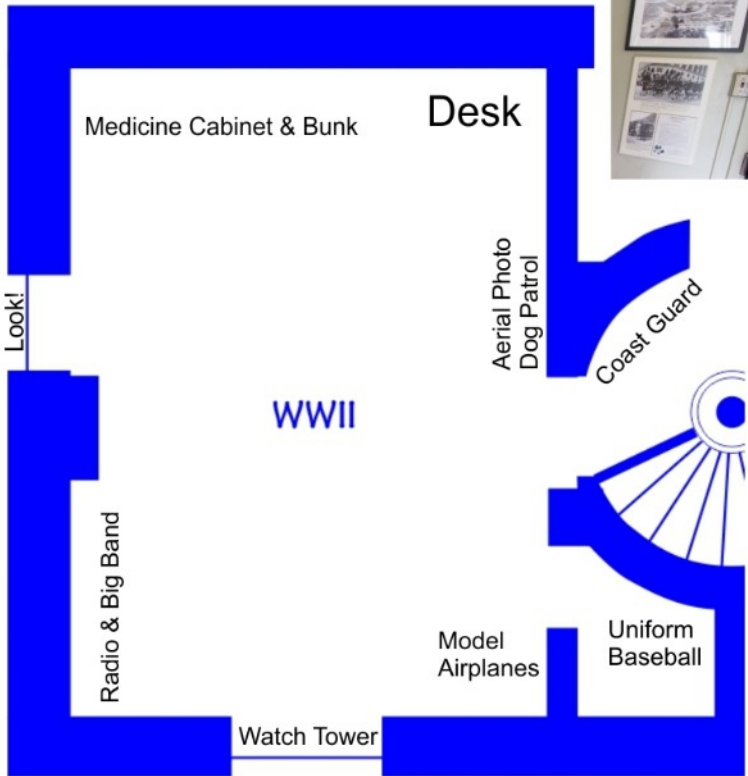
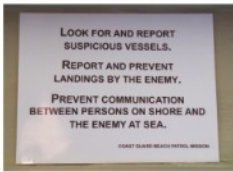
"This morning at 4:30 am the schooner Silver Cloud went ashore on the sand beach two miles to the eastward of Monterey.

No anchor watch being kept all hands turned in.  
She being at the time fast to the steamer's buoy  
by some means unknown got adrift.  
.....vessel a total loss, partial insurance."

*September 24, 1878, Allen Luce, keeper*

"Wind fresh N.W.  
Foggy  
No vessels seen.  
Mrs. E. Fish, my successor, arrived at the station."

*June 29, 1893, Allen Luce, keeper*



**WATCH TOWER**

Located south west of the lighthouse on what is now the golf course, this 1942 watch tower was over 40 feet tall.

It gave the Beach Patrol an unobstructed view of the southern approach to Monterey Bay.

